

NCF fans 50Hz










NCF fans 50Hz

The Nederman NCF Fans have direct drive motors which means a safe and cost effective operation. Installing an energy efficient NCF fan with our other Nederman products saves time and reduces energy costs. It is a centrifugal fan designed for use in all types of industrial process and ventilation systems, mounted indoor as well as outdoor. The fan is equipped with vibration absorbers as standard.














NCF fans 50Hz

Certifications	CE
Protection class	IP55
Installation	Outdoor, Indoor
Material	Sheet metal, painted grey, RAL 7045
[ProductAmbienTemperatureRange]	-30 to +40 °C (22 F to 104 F)
Frequency (Hz)	50
No of phases	3

Models

	Item no	Power Voltage (V)	Amperage (A)	[ItemNoiselevel]	Weight (kg)	Power (kW)
	14550128	230/400	7,9 / 4,6	69 db(A) at 2500 m³/h	67	2,2
	14550928	400/690	13,8/8,0	85 db(A) at 10000 m³/h	123	7,5
	14551028	400/690	7,8/4,5	74 db(A) at 4000 m³/h	105	4
	14551228	400/690	10,3/6,0	78 db(A) at 3500 m³/h	112	5,5
	14551328	400/690	13,8/8,0	77 db(A) at 6000 m³/h	150	7,5
	14551428	400/690	26,5/15,3	82 db(A) at 8000 m³/h	232	15
	14551528	400/690	32,5/18,8	84 db(A) at 10000 m³/h	292	18,5




Accessories

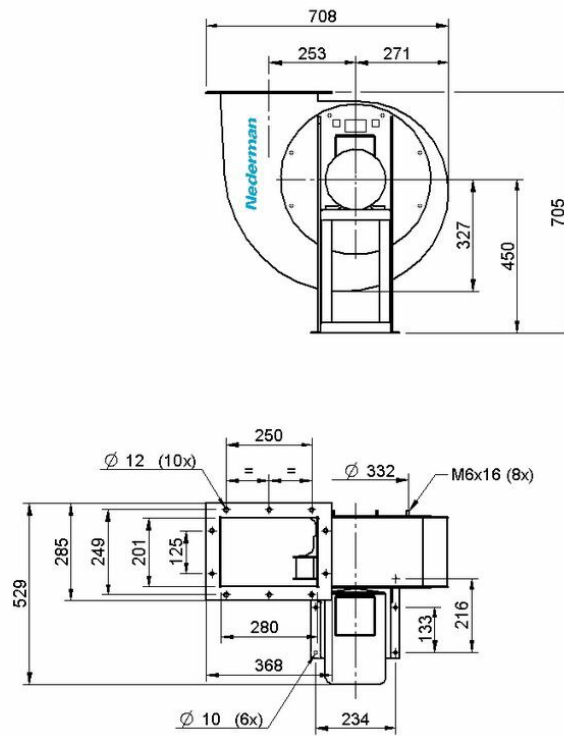
	Accessory	Item no
	Inlet adap. d250,30/15,40/25,50/25	14374438
	Inlet adapter d315, 30/25	14374439
	Inlet adapter d400, 80/20, 120/25	14374440
	Inlet adapter d500, 120/15, 160/25	14374441
	Outl. adap.288x205 d315,30/15,40/25	14374442
	Outlet adapter 322x229 d400, 30/25	14374443
	Outl.adap.361x256 d400,80/20,120/25	14374444
	Outl.adap.256x183 d250, 50/25,30/20	14374446
	Flex.inl.ad..d250,30/15,40/25,50/25	14374447
	Flexible inlet adapter d315, 30/25	14374448
	Flex.inlet.adap.d400, 80/20, 120/25	14374449
	Flex.inlet.adap.d500,120/15,160/25	14374450
	Flex.out.a.288x205 d315,30/15,40/25	14374451

Accessories

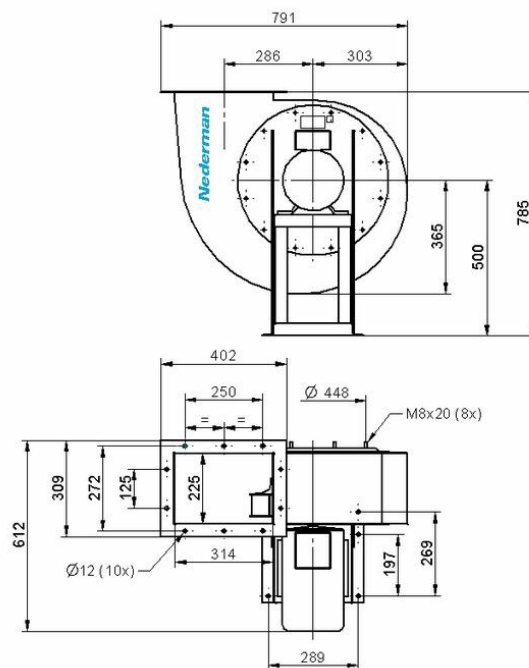
	Accessory	Item no
	Flex.out.a.361x256d400,80/20,120/25	14374453
	Flex.ou.a.453x322d500,120/15,160/25	14374454
	Inlet guard net d400, 80/20, 120/25	14374458
	Inlet guard net d500,120/15,160/25	14374459
	Outlet guard net, 30/15, 40/25	14374460
	Outlet guard net, 80/20, 120/25	14374462
	Outlet guard net, 120/15, 160/25	14374463
	Vibration absorber AM 30, 1 set	14374628
	Vibration absorber AM 25, 1 set	14374629
	Vibration absorber AM 50, 1 set	14374630
	Fan inverter 5,5	14522037
	Fan inverter 7,5	14522137
	Fan inverter 11	14522237

Accessories

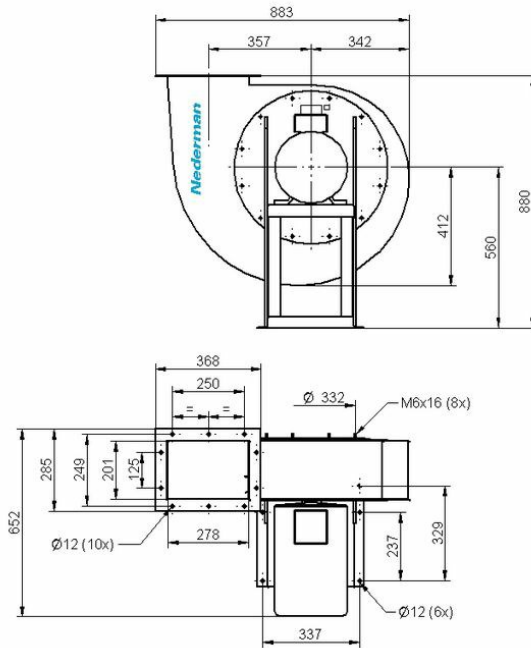
	Accessory	Item no
	Fan inverter 15	14522637
	Fan inverter 18,5	14525137
	Fan inverter 22	14525237



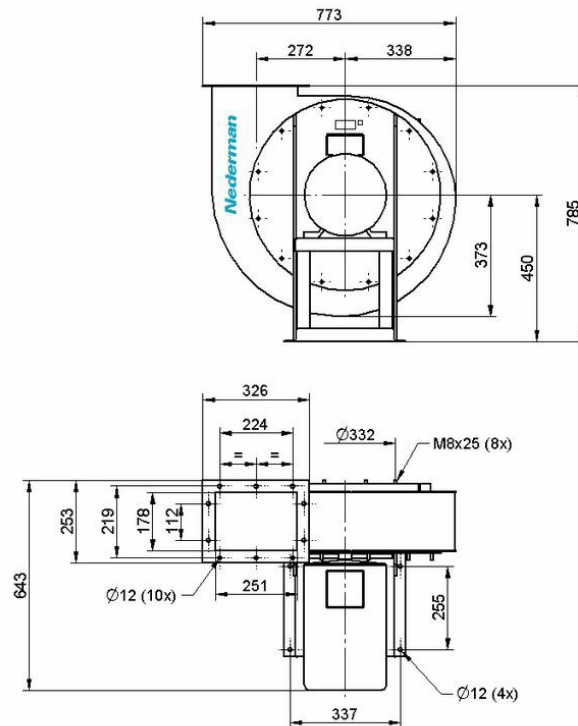
NCF 30/15 Duct inlet diameter 250 mm Duct outlet diameter 315 mm



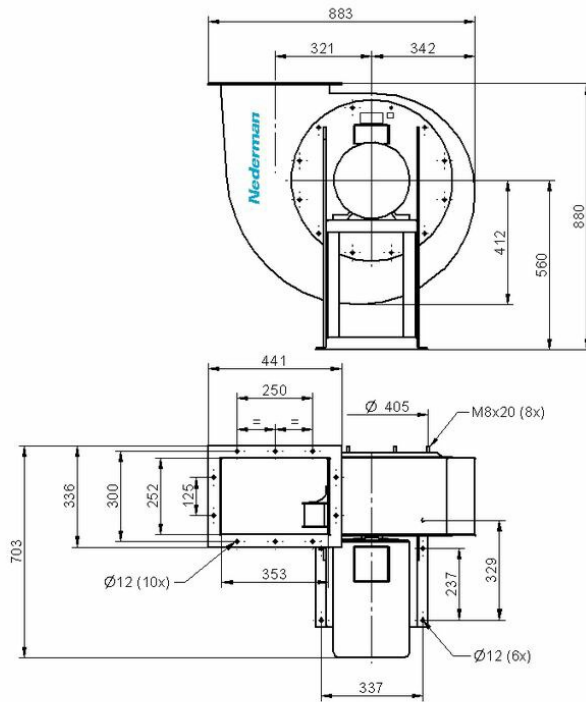
NCF 30/25 Duct inlet diameter 315 mm Duct outlet diameter 400 mm



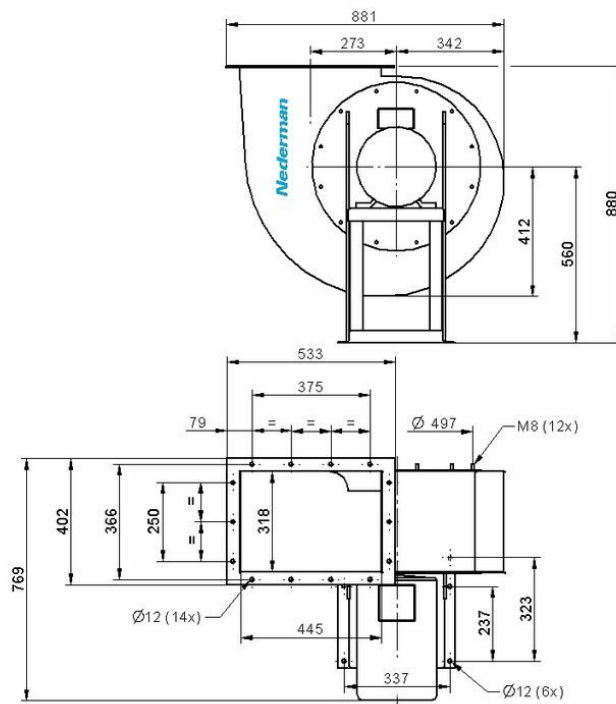
NCF 40/25 Duct inlet diameter 250 mm Duct outlet diameter 315 mm



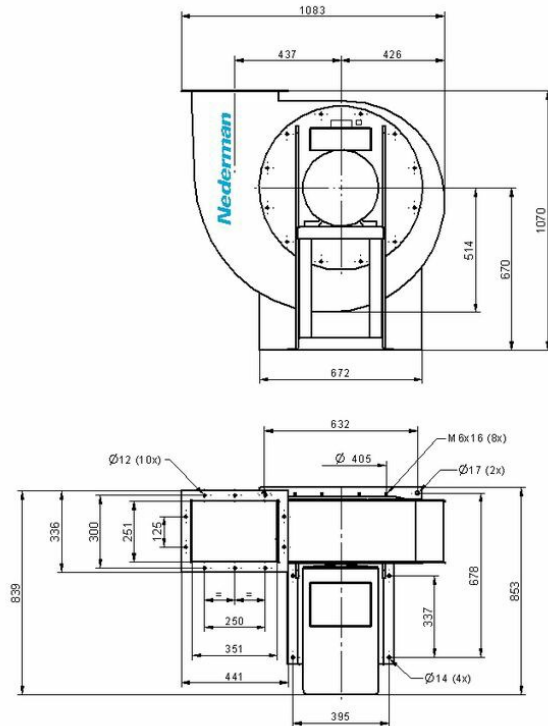
NCF 50/25 Duct inlet diameter 250 mm Duct outlet diameter 250 mm



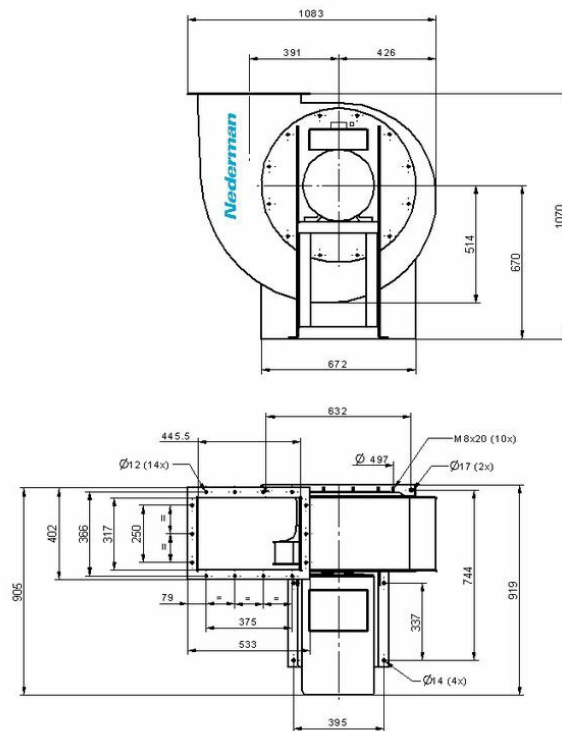
NCF 80/20 Duct inlet diameter 400 mm Duct outlet diameter 400 mm



NCF 120/15 Duct inlet diameter 500 mm Duct outlet diameter 500 mm



Fan NCF 120/25 Duct inlet diameter 400 mm Duct outlet diameter 400 mm



NCF 160/25 Duct inlet diameter 500 mm Duct outlet diameter 500 mm

